

REFERENCE GUIDE



Request a Clinic Visit

- Visit [childrensmercy.org/providers](https://www.childrensmercy.org/providers) and select a specialty.
- For assistance with referrals, call the Contact Center at **(816) 234-3700** or **(800) 800-7300**
7:30 a.m. to 7 p.m., M-F
8 a.m. to 4:30 p.m., Sat.

Transports, Admissions, Consults

Call **(800) GO MERCY** | **(800) 466-3729**

- A triage physician is available for questions
7 a.m. to 7 p.m., M-F.
- Subspecialist phone consultation available 24/7.

* For consult request requiring a patient to be seen in less than 3 days

Outpatient Laboratory

Location	Phone
Adele Hall	(816) 234-1530
CMH Kansas	(913) 696-8210
Broadway	(816) 960-8460
East	(816) 478-5211
Northland	(816) 413-2520

Imaging Services

Location	Phone	Centralized Scheduling	Centralized Fax
Adele Hall	(816) 234-3270	(816) 234-3272	(816) 802-1422
CMH Kansas	(913) 696-8180		
Broadway	(816) 960-8450		
East	(816) 478-5227		
Northland	(816) 413-2518		

Emergency Departments

Location	Phone	Fax
Adele Hall	(816) 234-3430	(816) 234-3421
CMH Kansas	(913) 696-8274	(913) 264-9972

Urgent Care Centers

([childrensmercy.org/urgent-care](https://www.childrensmercy.org/urgent-care))

Location	Phone	Fax
Blue Valley	(913) 717-4702	(913) 717-4791
East	(816) 478-5244	(816) 478-5294
Northland	(816) 413-2526	(816) 413-2650
Junction City	(785) 579-4300	

Important Contacts

Provider Portal: [childrensmercy.org/providers](https://www.childrensmercy.org/providers)

Children's Mercy Adele Hall Campus Operator	(816) 234-3000	24/7
Contact Center (Centralized Scheduling)	(816) 234-3700 or (800) 800-7300 (816) 855-1776 Fax	7:30 a.m. to 8 p.m., M-F 8 a.m. to 4:30 p.m., Sat.
Health Information Management (Medical Records)	(816) 234-3455 (816) 701-4034 Fax email: ROI@cmh.edu	8 a.m. to 5 p.m., M-F
Home Care	(816) 701-4300 MO (913) 696-5040 KS	8 a.m. to 5 p.m., M-F
My Patient Connections	Provider Help/Training and New Account Setup: (816) 302-8114 email: mpc@cmh.edu	7 a.m. to 7 p.m. Daily
Patient Advocate	(816) 234-3119 email: patientadvocate@cmh.edu	8 a.m. to 4:30 p.m., M-F
Patient Financial Services	choosechildrensmercy.org (816) 701-5100 email: pfscsr@cmh.edu	8:30 a.m. to 4:30 p.m., M-F (closed Noon to 1 p.m.)

Missouri

Kansas

Location

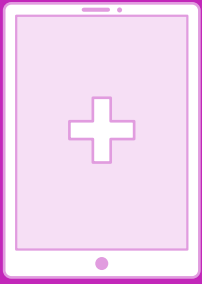
	Adele Hall (KCMO)	Broadway	Northland	East	CMH Kansas	College Blvd	Blue Valley	Olathe	Village West	University of Kansas Health System
Specialty										
Adolescent Medicine										
Adolescent Specialty Clinic (816) 960-4152		✓	✓	✓	✓	✓				
Eating Disorders (913) 696-5070		✓				✓				
Allergy & Immunology										
Allergy, Asthma, Immunology (816) 960-8900		✓	✓	✓	✓					
Advanced Asthma Interdisciplinary Respiratory (AAIR) Clinic (816) 983-6490	✓									
Asthma Education (816) 960-8900		✓								
Eosinophilic Esophagitis (EoE) Clinic (816) 234-3066	✓				✓					
Healthy Home/Environmental Health Program (816) 302-8564/8562	✓									
Immunology Clinic (816) 960-8900		✓								
Multidisciplinary Food Allergy Clinic (816) 960-8900		✓								
Beacon Program (816) 960-8040		✓			✓					
Burn and Trauma										
Burn Clinic (816) 234-3520	✓									
Cardiology (Heart Center)										
Cardiac Neurodevelopmental Clinic (816) 234-3880	✓									
Cardiology (888) 555-3880/(816) 234-3880	✓		✓	✓		✓				✓
CHAMP Clinic (816) 234-3880	✓									
Complex Syncope Clinic (816) 234-3880		✓								
Echocardiograms (816) 302-3699	✓		✓	✓		✓				✓
Electrocardiograms (816) 234-3247, #2	✓		✓	✓		✓				✓
Electrophysiology (816) 234-3880	✓					✓				✓
Exercise Stress Testing (816) 234-9416	✓					✓				
Fetal Cardiology (816) 234-3209	✓							✓		
Genetic Arrhythmia Clinic (816) 234-3880	✓									
Heart Failure/Heart Transplant Clinic (816) 302-8045	✓									
Preventive Cardiology (816) 302-3670	✓					✓				
Pulmonary Hypertension Clinic (816) 302-3672	✓					✓				
Single Ventricle Clinic (816) 302-3670	✓									
Cardiovascular Surgery (816) 234-3580	✓									
Child Adversity and Resilience (SCAN) (816) 234-3424	✓					✓				
Foundations for Foster Care Clinic (816) 302-8193	✓									
Clinical Pharmacology, Toxicology and Environmental Health (816) 234-3059	in home visits									
Healthy Home/Environmental Health Program (816) 302-8565										
GOLDILOKS Clinic (816) 234-3059	✓									
Dental (816) 234-3257	✓									
Dermatology (816) 960-4100										
General Dermatology		✓	✓	✓	✓					
Excision Clinic		✓								
Genetic Skin Disorder Clinic		✓								
Hemangioma Clinic		✓			✓					
Laser Clinic		✓			✓					
Melanoma Clinic		✓								
Phototherapy Service		✓								
Vascular Anomalies Specialty Clinic		✓								
Developmental and Behavioral Health										
Developmental and Behavioral Health (816) 234-3674	✓		✓	✓		✓		✓		
ADHD Clinic (913) 695-5740	✓					✓				
Autism Clinic (816) 234-3674	✓					✓				
Tourette Syndrome Center (816) 234-3490			✓							
Down Syndrome (816) 960-2856	✓					✓				
ENT (816) 234-3040, #2	✓		✓	✓	✓					
Pediatric Tracheostomy Clinic (816) 234-3040, #5	✓									
Emergency Medicine Adele (816)-234-3430 Kansas (913) 696-8274	✓				✓					
Endocrinology and Diabetes										
Endocrinology . Adele (816) 960-8803 North (816) 960-8803 Broadway (816) 960-8803 East (816) 478-5200 College (913) 696-8000 Olathe (816) 960-8803		✓	✓	✓		✓		✓		✓
22Q11.2 Deletion Syndrome Clinic / Super Q Express (816) 960-8828/8829		✓								
Childhood Diabetes Center (816) 960-8803		✓								
Endocrine Disorders in Cancer Survivors (816) 960-8803		✓								
Gender Pathway Services (816) 960-8844		✓								
Growth Hormone (816) 960-8803		✓								
GUIDE Clinic (816) 983-6794		✓								
Polycystic Ovary Syndrome Clinic (816) 960-8803		✓								
Thyroid Nodule and Carcinoma Clinic (816) 960-8803		✓								
Turner Syndrome (816) 960-8803		✓								
Type 2 Diabetes Prevention Clinic (816) 960-8803		✓								
Fetal Health										
Fetal Surgery and Intervention (816) 855-1800	✓							✓		
Fetal Cardiology (816) 234-3209	✓							✓		
Perinatal Clinic (816) 855-1800	✓							✓		

Missouri

Kansas

Location

Specialty		Adele Hall (KCMO)	Broadway	Northland	East	CMH Kansas	College Blvd	Blue Valley	Olathe	Village West	University of Kansas Health System
Gastroenterology(816) 234-3066	✓			✓	✓	✓			✓		✓
Abdominal Pain.....(816) 234-3066	✓										
Biofeedback Therapy.....(816) 234-3066	✓										
BRICK.....(816) 234-3066	✓					✓			✓		✓
Celiac Disease.....(816) 234-3066	✓										
Colorectal Center (Surgery Clinic).....(816) 234-3199	✓										
Eosinophilic Esophagitis (EoE) Clinic.....(816) 234-3066	✓										
Feeding Clinic.....(816) 234-3066	✓										
Inflammatory Bowel Disease (IBD) Clinic.....(816) 234-3066	✓										
Liver Care Center.....(816) 302-3410	✓										
Pediatric Motility.....(816) 234-3066	✓										
Polyposis Center.....(816) 234-3066	✓										
General Surgery(816) 234-3199	✓			✓		✓					
Bariatric Surgery.....(816) 234-3199	✓										
Burn Specialty Team.....(816) 234-3520	✓										
Comprehensive Colorectal Center.....(816) 234-3199	✓										
Pectus Center.....(816) 234-3199	✓					✓					
Pediatric Adolescent Gynecology.....(816) 960-4152	✓					✓					
Genetics											
Ehlers Danlos Syndrome Clinic.....(816) 234-1666	✓										
Genetics and Dysmorphology Clinic.....(816) 234-3771	✓					✓					
Gynecology											
Pediatric Adolescent Gynecology.....(816) 234-3199			✓			✓					
Endometriosis.....(816) 234-3199	✓										
Hearing and Speech(816) 960-4001	✓	✓	✓	✓			✓				
Hematology/Oncology/BMT(816) 302-6808											
Hem/Onc	✓										
Adolescent and Young Adult (AYA)	✓										
Brain Tumor	✓										
Cardio-Oncology	✓										
Cellular Therapies	✓										
Coagulation and Thrombosis Consult Service	✓										
Comprehensive Stroke Clinic	✓										
Hemophilia	✓										
Histiocytosis	✓										
HOPE Clinic (Spanish)	✓										
Leukemia/Lymphoma	✓										
Liver Tumor	✓										
Sickle Cell	✓										
Soft Tissue and Bone Sarcoma	✓										
Stem Cell Transplant	✓										
Survive and Thrive	✓										
Young Women's Clinic	✓										
Infectious Diseases(816) 983-6325											
International Adoption	✓										
International Travel Medicine Clinic	✓										
Special Immunology	✓										
Neonatology											
NICU.....(816) 234-3300	✓										
Congenital Heart Disease Screening.....(816) 234-3593	✓										
NEON Infant Care Clinic.....(816) 234-3593	✓										
Neonatal Follow-up Clinic.....(816) 302-8469	✓						✓				
Nephrology(816) 234-3030/(800) 276-0985	✓					✓					✓
Dialysis.....(816) 234-3100	✓										
Enuresis and Voiding Disorder Clinic.....(816) 234-3030	✓					✓					✓
Hypertension Clinic.....(816) 234-3030	✓					✓					✓
Nephrology Genomics Clinic.....(816) 234-3030	✓										
Neurology(816) 234-3490	✓				✓	✓					✓
Comprehensive Headache Clinic.....(816) 234-3700	✓										
Epilepsy Center.....(913) 696-8950	✓					✓					
Headache Relief Clinics.....(816) 234-3700	✓					✓					
Headache Treatment Center.....(816) 302-1815			✓	✓		✓		✓			✓
Kernicterus Center of Excellence.....(816) 302-6310											
Movement Disorders and Spasticity Clinic.....(816) 302-6310	✓										
Neurology Rheumatology Clinic.....(816) 234-1666, #3	✓										
Neurophysiology.....(816) 234-3092						✓					
Stroke Center.....(816) 234-3490	✓										
Tourette Syndrome.....(816) 234-3419				✓							
Neurosurgery(816) 983-6739	✓					✓					



Telemedicine

Children's Mercy has more than 500 pediatric specialists providing telemedicine services, including facilitated appointments at our regional centers (St. Joseph, Joplin, Wichita, Junction City), as well as direct to patient services. Due to advancements in technology, a Children's Mercy provider can be virtually anywhere delivering the same high-quality care that is the Children's Mercy standard. There are times when patients and doctors still need in-person visits. Children's Mercy providers will guide your referred patients on when a telemedicine visit is appropriate.

To Refer for Appointments:

- Go to childrensmercy.org/providers and select **Refer a Patient**.
 - » Select a specialty.
 - » Follow the instructions to request an appointment.
- The Children's Mercy Contact Center will call the patient within 48 hours to schedule.
- For assistance with scheduling, call the Contact Center at **(816) 234-3700** or **(800) 800-7300**.

Referral Tips:

- Families can call (816) 234-3700 or (800) 800-7300 to follow up on appointment scheduling after three days of the initial request.
- For assistance coordinating several clinic appointments on the same day, call (816) 234-3700 or (800) 800-7300 and ask for the Provider Resource Nurse.
- Your patient's appointment status can be found on the Referral Status Report. To request access to this report, contact Michelle Dominiak, mmdominiak@cmh.edu.

Children's Mercy Greater Kansas City Locations

**Children's Mercy
Adele Hall Campus**
2401 Gillham Road
Kansas City, MO 64108
(816) 234-3000

**Children's Mercy
Broadway**
3101 Broadway
Kansas City, MO 64111
(816) 234-3000

**Children's Mercy
East**
20300 East Valley View Parkway
Independence, MO 64057
(816) 478-5200

**Children's Mercy
Northland**
501 NW Barry Road
Kansas City, MO 64155
(816) 413-2500

**Children's Mercy
Hospital Kansas**
5808 West 110th
Overland Park, KS 66211
(913) 696-800

**Children's Mercy
College Boulevard**
5520 College Blvd.
Overland Park, KS 66211
(913) 696-585

**Children's Mercy
Blue Valley**
6750 West 135th Street
Overland Park, KS 66223
(913) 717-4700

**Children's Mercy Sports
Medicine Center at Village West**
1801 N. 98th St.
Kansas City, KS 66111
(913) 264-3000

**Children's Mercy
Olathe**
20375 W 151st Street, Ste. 402
Olathe, KS 66061
(913) 264-0000

**Children's Mercy
At The University of Kansas Health System**
2000 Olathe Boulevard, Level 3
Kansas City, KS 66160
(913) 264-0050

Provider Relations

Michelle McMillan
Assistant Director
Cell: (816) 260-1997
mmcmillan@cmh.edu

Rose Mettlen
Provider Relations Specialist
Cell: (203) 434-1625
ramettlen@cmh.edu

Mark Wharton
Provider Relations Specialist
Cell: (816) 695-0279
mtwharton@cmh.edu

Nancy J. Baker
Administrative Assistant
Office: (816) 701-5269
njbaker@cmh.edu

Medical Staff Leadership

Robert H. Lane, MD, MS
Executive Vice President / Physician-in-Chief
Administration

Shawn St. Peter, MD
Surgeon-in-Chief
Program Director, Pediatric Surgery Fellowship and
Surgical Scholars Program
Professor of Surgery
University of Missouri-Kansas City
School of Medicine

Douglas Blowey, MD
Medical Director
Children's Mercy Hospital Kansas,
Integrated Care Solutions, Physician Services
Associate Professor of Pediatrics and Pharmacology
University of Missouri-Kansas City
School of Medicine

Jeanne James, MD
Senior Vice President and Chair of Pediatrics
Children's Mercy Kansas City
Professor and Chair of Pediatrics
University of Missouri-Kansas City School of Medicine
Professor and Chair of Pediatrics
University of Kansas School of Medicine

Provider Portal: childrensmercy.org/providers



2401 Gillham Road | Kansas City, MO 64108 | (816) 234-3000 | (800) GO MERCY